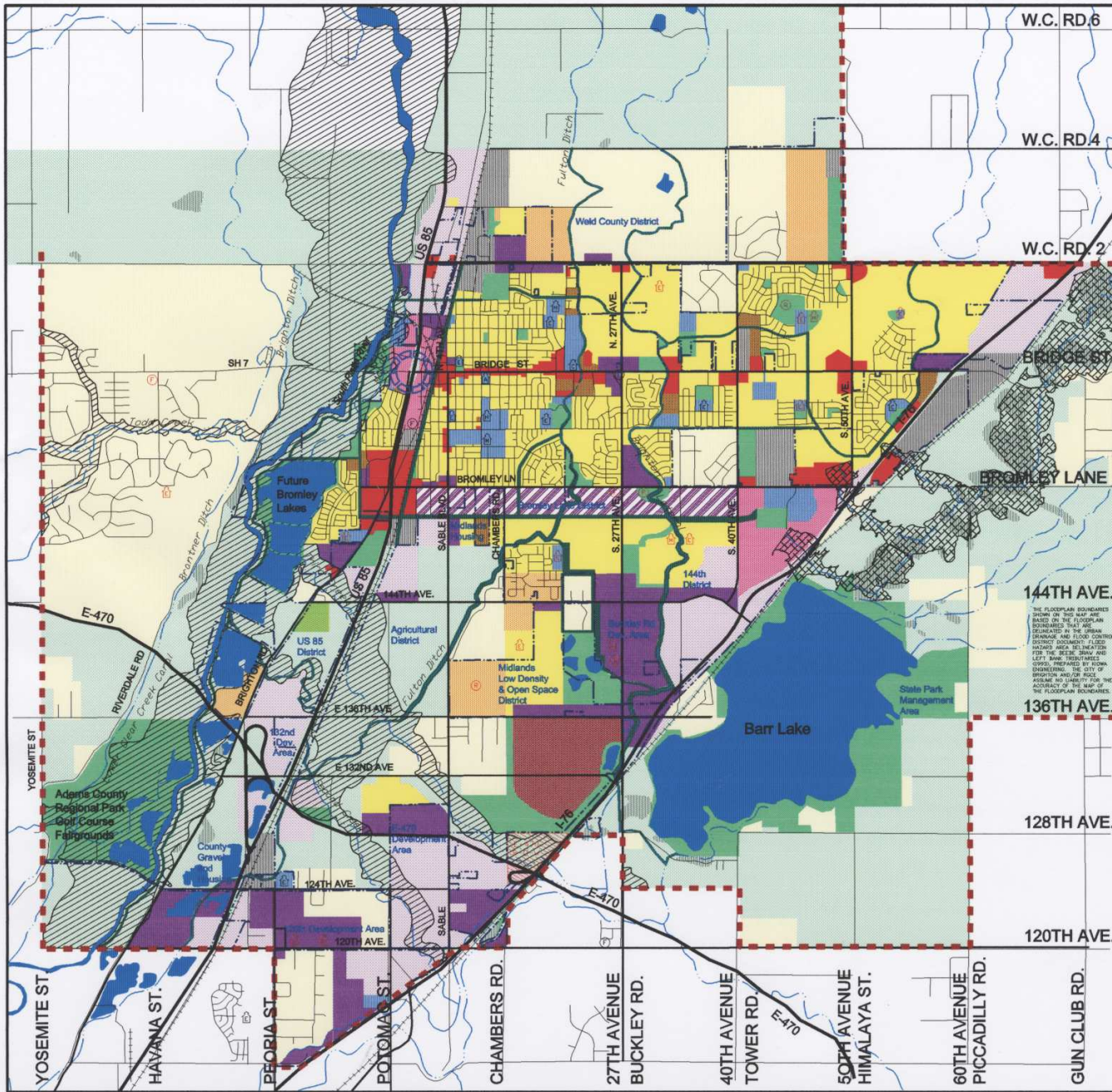


Figure 4: Land Use Plan The Freestanding City



THE FLOODPLAIN BOUNDARIES SHOWN ON THIS MAP ARE BASED ON THE FLOODPLAIN BOUNDARIES SHOWN ON THE FLOODPLAIN BOUNDARIES MAP AS DEVELOPED BY THE DRAINAGE ENGINEERING AND FLOOD CONTROL DISTRICT COMMISSION. THESE FLOODPLAIN BOUNDARIES ARE LEFT AS PRESENTED BY THE DISTRICT COMMISSION. THE CITY OF BRIGHTON IS NOT RESPONSIBLE FOR THE ACCURACY OF THE MAP OR THE FLOODPLAIN BOUNDARIES.

- | | | |
|--|--|--|
| Agriculture (minimum 30 acres lot) | Commercial | Employment (Large, Personal, Regional, Commercial, Light Industrial and Office Uses) |
| Rural Residential (2 - 5 acres per unit) | Town Center Downtown District | Bromley Lane District |
| Low Density Residential (4 DU/AC - 2.5 DU/AC) | Regional Commerce (Regional Retail & Employment) | Conservation Easement |
| Medium Density Residential (2.5 - 3 DU/AC) | Industrial | Wetlands |
| High Density Residential (over 3 DU/AC) | Parks & Open Space | Lakes / Water |
| Mixed Use (Residential, Commercial, Office and Open Space) | Public Lands | Floodplain |
| City Limits | IGA Boundary | Barr Lake Inundation Area |
| E-470 | Major Arterial | Collector |
| Freeway | Minor Arterial | Local Road |

- Brighton School District 27J**
- | | | |
|----------|----------|----------------------------|
| Existing | Proposed | Elementary School |
| Existing | Proposed | Middle School |
| Existing | Proposed | High School |
| Existing | Proposed | Community Education Center |
- Note: Locations are general within Sections
- Future Recreation Facility
 - Existing Fire Station
 - Future Fire Station
 - Downtown District
 - Trails

